



SCNEWTON INC.

SYNCHRO TECHNOLOGY OVERVIEW

INFO@scnewtoninc.com

412-508-6509



Competitive Advantage 1

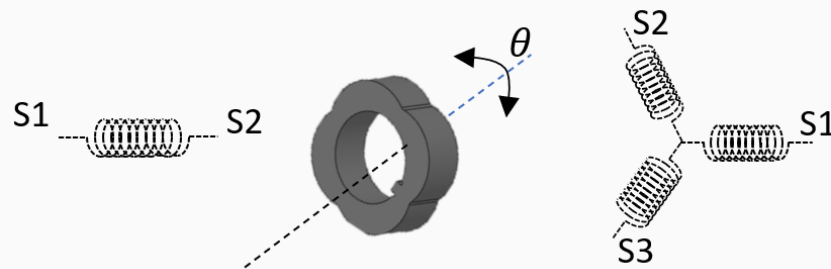
“It is a reluctance synchro”

FEATURE:

- No Transformer stage
- No coil on rotor

ADVANTAGES:

- Reduced manufacturing time
- Higher speed >20KRPM
- Higher temperature >200 C
- Accuracy 60 Arc.min
- Low power consumption <200 mW





Competitive Advantage 2

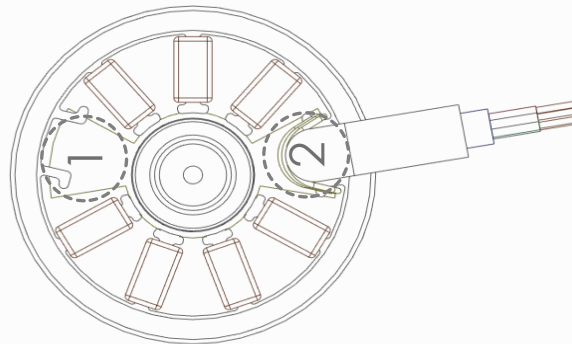
“It is simple to manufacture”

FEATURE:

- Two Thru passages is allocated for lead wire assembly of synchro and the electric motor
- Simplified lamination frames

ADVANTAGE:

- No need for bulky terminals, pigtail is feasible thru synchro





Competitive Advantage 3

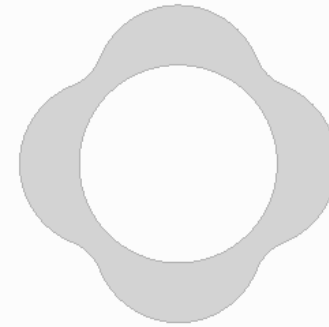
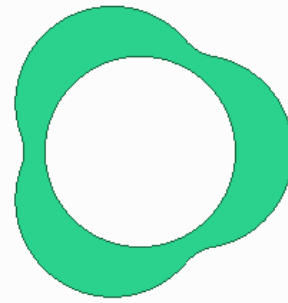
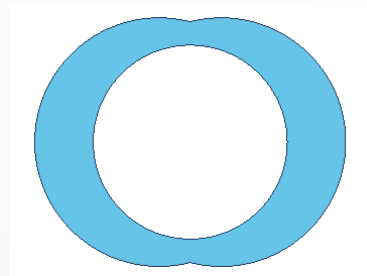
“It has various design option”

FEATURE:

- Variable number of lobes. [2x,3x,4x]
- Voltage 4-VRMS, Frequency 25-kHz, Ratio: 0.5

ADVANTAGE:

- Ease of adaptation for motors with 1P,3P, and 4P number of poles , [P=2N, N=1,2,... ,n]





Competitive Advantage 4

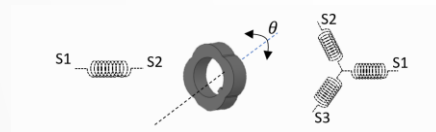
“It is an N-phase synchro”

FEATURE:

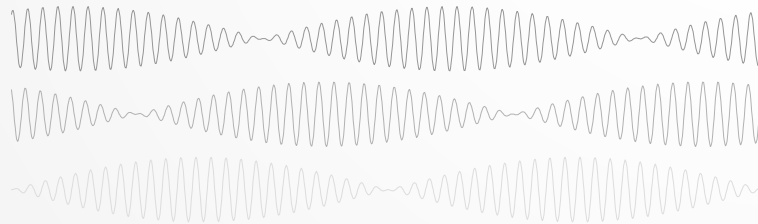
- Variable number of output phases

ADVANTAGE:

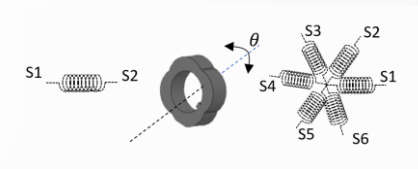
- Reconfigurable for motors with higher number of phases such as 5, 6 and 9 phases



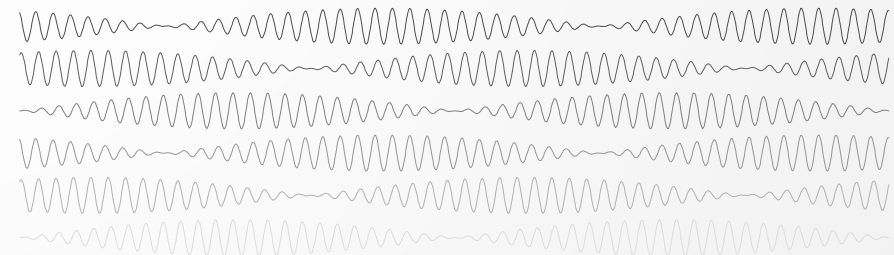
3-phases



— S3-S1 — S1-S2 — S2-S3



6-phases



— S1-S2 — S2-S3 — S3-S4 — S4-S5 — S5-S6 — S6-S1



Competitive Advantage 5

“It is size scalable”

FEATURE:

- Due to lack of rotor coils and optimal number of teeth, smaller size is eased for production.

ADVANTAGE:

- Down to size 5.5 and up to size 55”.

